



PN 16 / 25
DN 25 / Inside thread G1

Product Features

- Single chamber air valve, directly operated by the flow medium
- For discharge of small air volumes during operation
- Cylindrical inside thread in acc. with DIN ISO 228-1, G 3/4", G1", G1 1/4"
- Delivery inspection acc. to EN 12266 (DIN 3230 part 4)

Materials

- Body and bonnet of ductile cast iron EN - JS 1030 (GGG-40)
- Floats of plastic
- Venting seal of NBR

Corrosion Protection

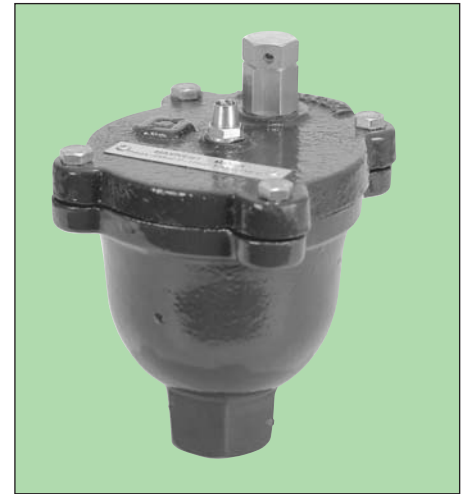
- Inside and outside epoxy coated

Field of Application

- Minimum pressure for sealing of valve: 0,5 bar
- Max. operating temperature: 50°C

Alternatives

- PN 16 with stop cock
- Pressure rate PN 25



For information about installation, commissioning, operating and maintenance we kindly refer to our "**Installation and Operating Instructions - Valves**".

Field of Use

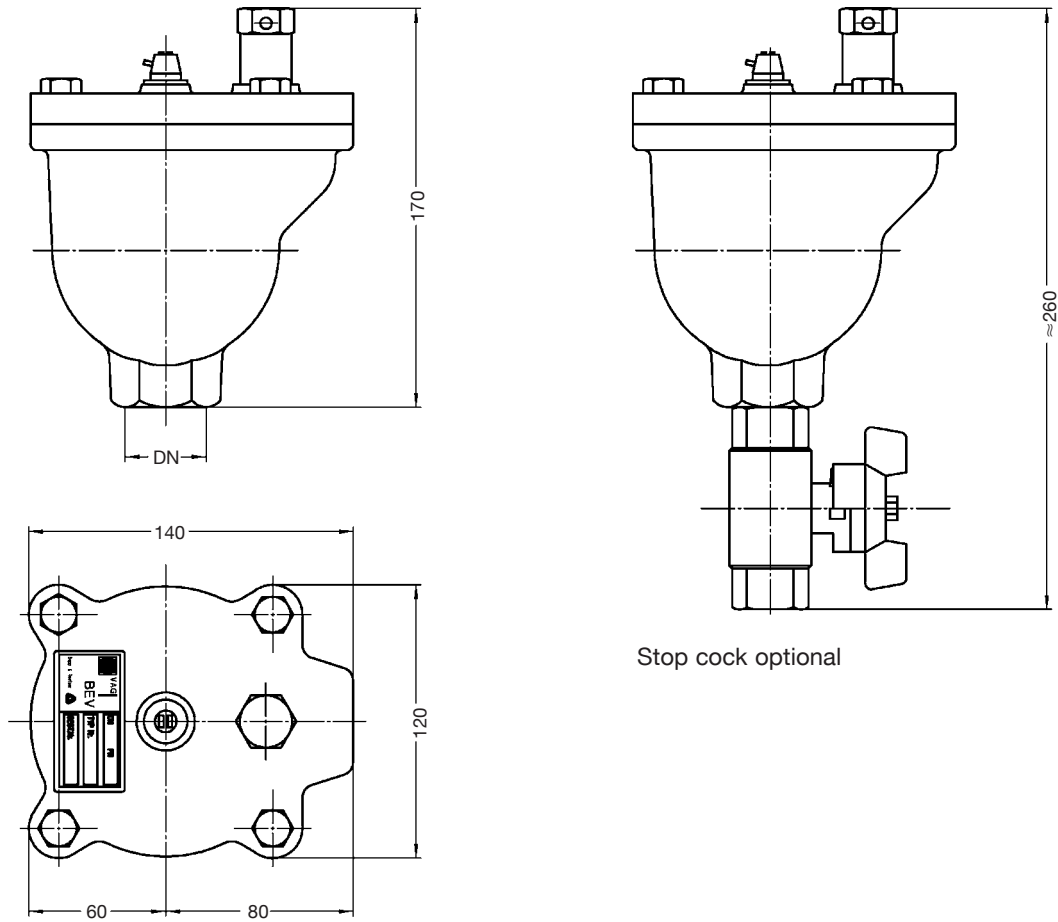
Water

Final Inspection Test in acc. with EN 12266

Connection thread DIN ISO 228-1 G...	PN bar	Max. operating pressure bar	Max. operating temperature for neutral liquids °C	Test pressure in bar with water in body and seat
3/4	16	16	50	21
1	25	25		37.5
1 1/4				



Dimensions



Stop cock optional

Socket connection	G	3/4"	1"	1 1/4"
Weight without ball valve	(kg)	4,5	4,5	4,5

Venting quantity

Discharge capacity under full operating pressure

