



PN 10/16
DN 50...200



Product Features

- To EN 12334
- Soft sealing
- Full bore
- Low friction lost
- Min. wear / easy maintenance
- Face to face to EN 558-1, basic series 48 (DIN 3202, F6)
- Flange connection to EN 1092-2 / PN 10

Materials

- Body and bonnet of ductile cast iron EN - JL 1040 (GGG-40)
- Ball of aluminium, NBR coated
- Bolts and nuts of stainless steel A2

Corrosion Protection

- Inside and outside epoxy-coating

Field of Application

- Max. operating temperature for neutral fluids: 50°C
- Waste water lines with danger of blockage

Alternatives

- With sinking ball

on request

- Larger DN
- With floating ball
- Higher pressure
- Aggressive medium

For information about installation, commissioning, operating and maintenance we kindly refer to our **“Installation and Operating Instructions - Valves”**.

Field of Use

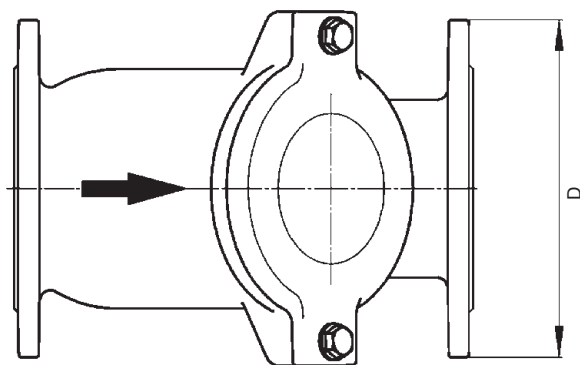
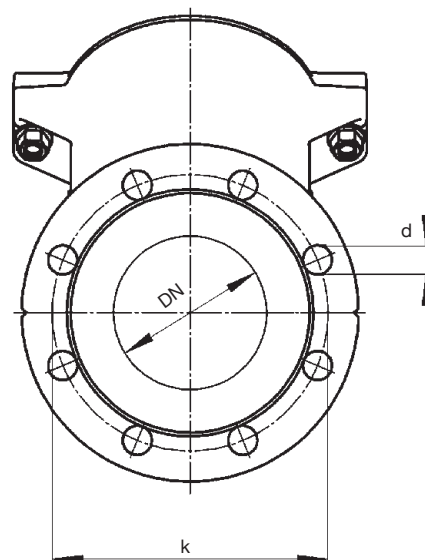
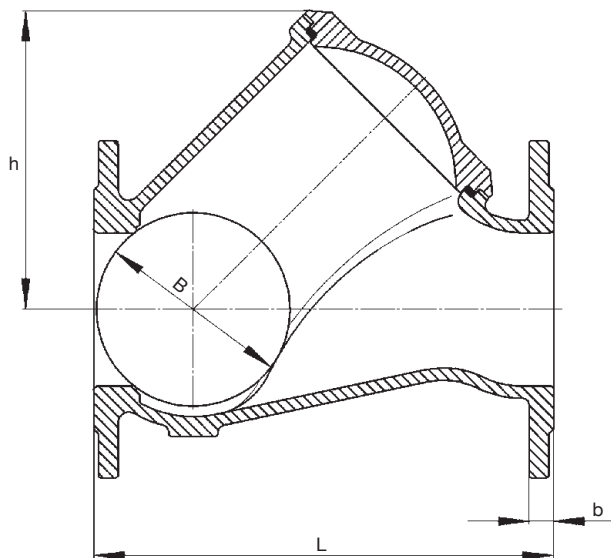
Final Inspection Tests in acc. with EN 12266

DN mm	PN bar	Max. operating over-pressure bar	Max. operating temperature °C	Test pressure in bar	
				with water in body	in seat
50... 150	16	16	50	24	17,6
200	10	10	50	15	11

We reserve the right to make technical changes and use similar or higher-quality materials. Drawings are non-binding



Dimensions / weights



Dimensions in mm		50	65	80	100	125	150	200
Dimensions	h	116	146	166	194	231	262	336
	L	200	240	260	300	350	400	500
Ball diameter	B	63	82	101	126	158	189	252
Flange connection	D	165	185	200	220	250	285	340
	k	125	145	160	180	210	240	295
	No. of holes	4	4	8	8	8	8	8
	d	18	18	18	18	18	23	23
	b	19	19	19	19	19	19	20
Net weight	kg	8	11	13	19	28	37	72
Volume req.	m ³	0,007	0,010	0,014	0,02	0,031	0,046	0,086

We reserve the right to make technical changes and use similar or higher-quality materials. Drawings are non-binding